

# NAVY JACK HOUSE

## The Case for Restoration and Preservation

### APPENDIX A



*“The history of this community resides in this building.”*

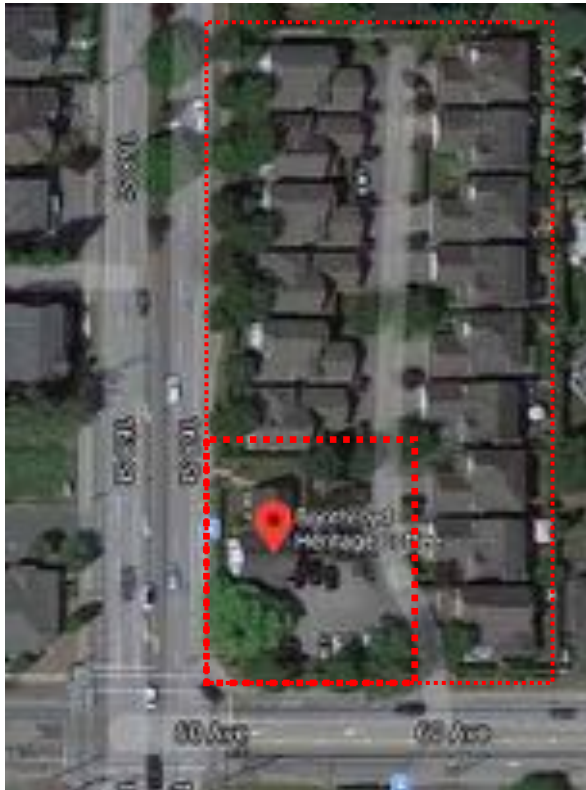
#### **A. ADAPTIVE RE-USE & BLUE SKY IDEAS**

- a. Boothroyd House & Boothroyd Heritage Coffee
- b. Stanley Park Brewing Co.
- c. Blue Sky Navvy Jack House Ideas!
  - Waterfront Corner Store
  - Corner Grocery & Cafe
  - Beach Cafe
  - Brew Pub
  - Heritage Foods
  - Community Facilities



## BOOTHROYD HOUSE

- Heritage house restored as key feature in a larger townhouse development
- Boothroyd Heritage Coffee on ground floor, also serves as local photo gallery
- Offices on 2nd floor, meeting room and music lessons in basement
- Very similar building form to Navy Jack House, but about 1 year younger



Located at 5 Corners in Cloverdale, Surrey, at 60th Ave. & 168th Street



## Navy Jack House Citizen Group



Morning coffee on Boothroyd House porch



East patio looking west to Boothroyd House, with original building on left. Later addition on right was retained to provide functional space to support the ground floor uses.

# Navy Jack House Citizen Group



Boothroyd Heritage Coffee interior, features historical photographs and local art



## Navy Jack House Citizen Group



Boothroyd's columns and fretwork are similar to Navy Jack's, to be replicated and replaced.



Canada Day celebration with outdoor concert in front of Boothroyd House's southern porch.

**STANLEY PARK BREWING CO.**  
(Fish House)



Figure 6: Design Concept - Back Entrance & Concession (northeast view)



Figure 10: Design Concept - Exterior Concession & Bike Service Station (northeast facing)

**SUMMARY**

The Stanley Park Brewing Co. is a responsible community-minded partner committed to preserving the integrity of the park and building while bringing the art of brewing back to Stanley Park. Their proposed new brewpub facility will be able showcase the eco-driven brewing process of their craft beers that are inspired by the feelings, places, and rich history of Stanley Park.

Staff recommend that the Board approve the proposed design and concept for the former Fish House Restaurant site as outlined in this report, and authorize staff to enter into a lease agreement with the Stanley Park Brewing Co. Revitalizing this uniquely situated heritage building will provide improved amenities to local park users and will create a destination location for both tourists and Vancouver residents.

The \$4.5M investment proposed by Stanley Park Brewing Co. will significantly increase the value of the current facility, enhance visitor experiences, and provide increased Park Board revenues that will benefit the entire parks and recreation system and delivery of service to the community.

General Manager's Office  
Vancouver Board of Parks and Recreation  
Vancouver, BC

# BLUE SKY NAVVY JACK HOUSE IDEAS!

## WATERFRONT CORNER STORE



Painting by Barbara Wood

### Background (written by Geoff Jopson)

*"Some of you may remember the Downstairs Gallery, a small art gallery once located in the Village Square in Ambleside. Many years ago I attended the opening of a showing by Vancouver artist Barbara Wood, entitled "Corner Stores". Barbara was known for her whimsical drawings of Vancouver buildings and street scenes, and had recently completed a series of prints celebrating the corner stores of the 1950's - family run stores that at one time had been the heart of the neighbourhood in Kitsilano, Mt. Pleasant, Grandview, and West Vancouver.*

*For the opening, the gallery brought back the nostalgia of that time by decorating its space to appear as a corner store, complete with penny candy, baseball cards, and an old Coke machine. The show was great fun, appealed to many of us with childhood memories of our favourite corner store, and every print sold that same day. Three of the prints were of corner stores in our community - the "Black Cat" in West Bay, Sherman Post Office at Sandy Cove, and the Ambleside Grocery at 14th and Marine (and yes, that is the original spelling from the signage on the building). Fortunately I purchased two, and they are shown in the attachments.*

## Navy Jack House Citizen Group

### The Concept of a Waterfront Corner Store

*The corner stores that you see in these two photographs were much more than a place to buy a loaf of bread and some milk - they were places where people gathered. Indeed, if you look closely at the photo of the Sherman Post Office, you will see that Barbara named this drawing "Meet me at Sherman's". They were places where neighbours met for coffee, where the shopkeeper knew the children's names, and where the architecture was both unique and charming. .*

*The restoration of corner stores such as these has proven very popular. I have visited several, and think of one in Woodstock, Vermont that was particularly charming, complete with a soda fountain and a large and comfortable veranda. Visitors and residents alike were drawn to the warmth and history of the building.*

*On the waterfront in West Vancouver, filled with photographs of the original home and its residents, I believe that such a "corner store" would prove very popular. It would have a heritage appeal, though of a time period well after the founding of our community, and perhaps it could be the permanent home of the West Van Historical Society."*



*Painting by Barbara Wood*



# BLUE SKY NAVVY JACK HOUSE IDEAS!

## CORNER GROCERY & CAFE



### Le Marche St. George

Address: East 28th Avenue and St. George (near Main Street)

Web site: <http://www.marchestgeorge.com/menu2>.

Press: <http://www.marchestgeorge.com/press>

*"A very cool corner grocery store that sells coffee, fresh made crepes and locally sourced cheese and grocery items. They now have a second location at West 7th and Ontario that is a wine bar with gourmet local cheese."*



# BLUE SKY NAVVY JACK HOUSE IDEAS!

## CORNER GROCERY & CAFE



### The Federal Store

Address: West 10th Avenue and Quebec (near Main Street, 2601 Quebec)

Web site: <https://federalstore.ca/>

Instagram: <https://www.instagram.com/federalstorevan/?hl=en>

*"Great grocery store, restaurant also with an old corner store theme."*



*"The Federal Store is a small neighbourhood grocery and cafe tucked into the heart of Mount Pleasant, Vancouver. We specialize in local groceries, lunches, handmade baking, cakes, and exceptional coffee—all made with love."*

# BLUE SKY NAVVY JACK HOUSE IDEAS!

## BEACH CAFE



# BLUE SKY NAVVY JACK HOUSE IDEAS!

## BREW PUB

We can expect to find a pretty tricked-out new space that pays homage to the park and the natural environment, a full-service kitchen, tasting room, patios, small batch beers brewed on site, and a swag shop.



Inside Stanley Park Brewing's restaurant and brewpub space in April 2019. Stanley Park Brewing Facebook

# BLUE SKY NAVVY JACK HOUSE IDEAS!

## HERITAGE FOODS



- picnic baskets
- fish and chips
- fiddleheads
- heritage candy
  - gelato
  - bannock
  - apple pie
  - etcetera...



# BLUE SKY NAVVY JACK HOUSE IDEAS!

## COMMUNITY FACILITIES



- MULTI-PURPOSE COMMUNITY BUILDING
- ARTS FACILITIES
- MUSIC, DRAMA, VISUAL ARTS
- MEETING SPACES
  - EVENTS
  - WEDDINGS
- RECONCILIATION CENTRE
- TEACHING FACILITY



- FITNESS ,YOGA...
- ETCETERA...

